

ENVISTYR WEB

Online control with advanced monitoring components that makes new standards for process controlling on waste water treatment plants.



EnviStyr Web is a unique web- and module-based advanced online control system, which can easily be integrated with all types of Scada-systems.

EnviStyr Web makes new standards for process controlling on waste water treatment plants.

The system can be used at any computer with access to the internet.

The process can be monitored from your home office, tablet or smartphone. All accessible measurements and calculations are either shown in a web browser or e.g. an IGSS dashboard.

The operation of the system is simple and logic, which improves the user experience and saves valuable time. The system is server based and is hosted at EnviDan A/S.

Module based solution - the only thing you need!

When implementing EnviStyr Web, it is possible to choose among several web based controlling- and monitoring components – there are no predefined package solutions.

The needs can vary depending on size and structure of the waste water treatment plant, and we offer a system where you can choose exactly the components you need.

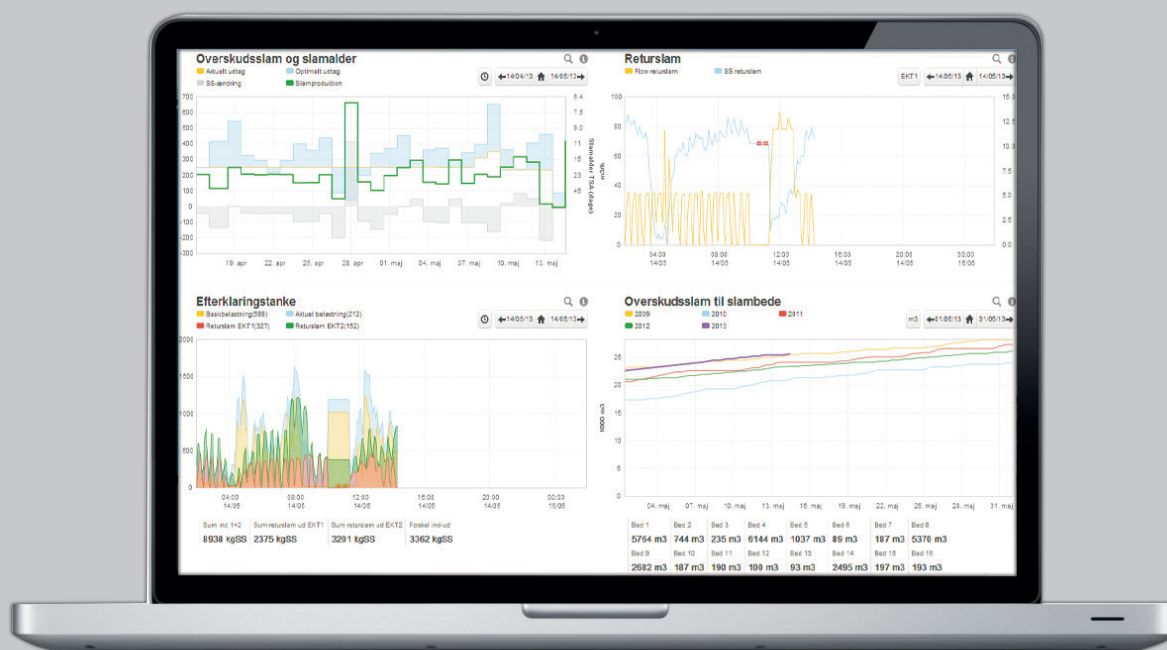
The setup and pricing makes EnviStyr Web an attractive system, both for small and large waste water treatment plants due to the many controlling- and monitoring components.

General features – overview of performance and results

Among other features, EnviStyr Web can monitor energy consumption and give a simple overview of e.g. energy optimization results or other calculated key figures for continuously benchmarking – useful for daily adjustments as well as for management reporting. The structure of EnviStyr Web is simple and easy to implement!

EnviStyr Web contains advanced possibilities for presentation and usage of history for example calculation of setpoints, and it is flexible and simple to change in between the different displays, and usage of history for example calculation of setpuncts, and it is flexible and simple to change in between the different displays.

Online control with advanced monitoring components that makes new standards for process controlling on waste water treatment plants.



Aeration control

Adjust the oxygen setpoint and aeration to the actual requirement based on online measurements of NH_4 , NO_3 and oxygen in the aerated process section.

The module ensures improved quality of sewage and lower energy consumption.

Recirculating flow

Calculates and regulates the recirculating flow after DN-capacity and concentration of NO_3 in the outlet.

Chemical dose

Calculates the dose after actual inlet flow and actual measurement of PO_4 , showing dose as amount, key figures and summed consumption year to date.

Energy monitoring

Monitors and displays kWh-consumption and calculated key figures for selected power units of the plant.

Displays sum by year to date and continuous comparison/benchmarking with last year's consumption.

Process condition and nitrogen rates

Continuously calculates and monitors nitrification and denitrification rates to allow timely response to nitrification inhibitions and loss of capacity.

Load monitoring

Continuously displays plant load and capacity of inlet flow, oxygen and nitrogen.

Return sludge control and control of the secondary clarifiers

Calculates the required return sludge flow for each secondary clarifier based on SS in the return sludge and actual load/sludge level in clarifiers. The module also provides monitoring of sludge blanket and SS-balance of outlet from secondary clarifiers.

The newest module is advanced control and monitor of operation of digesters.

If you would like to know more about EnviStyr Web please contact: Søren B. Hansen at +45 27 15 37 61

